

BOWLERS MILL  
RESERVOIR

ZION  
CROSSROADS

FERNCLIFF

LOUISA INDUSTRIAL  
AIR PARK

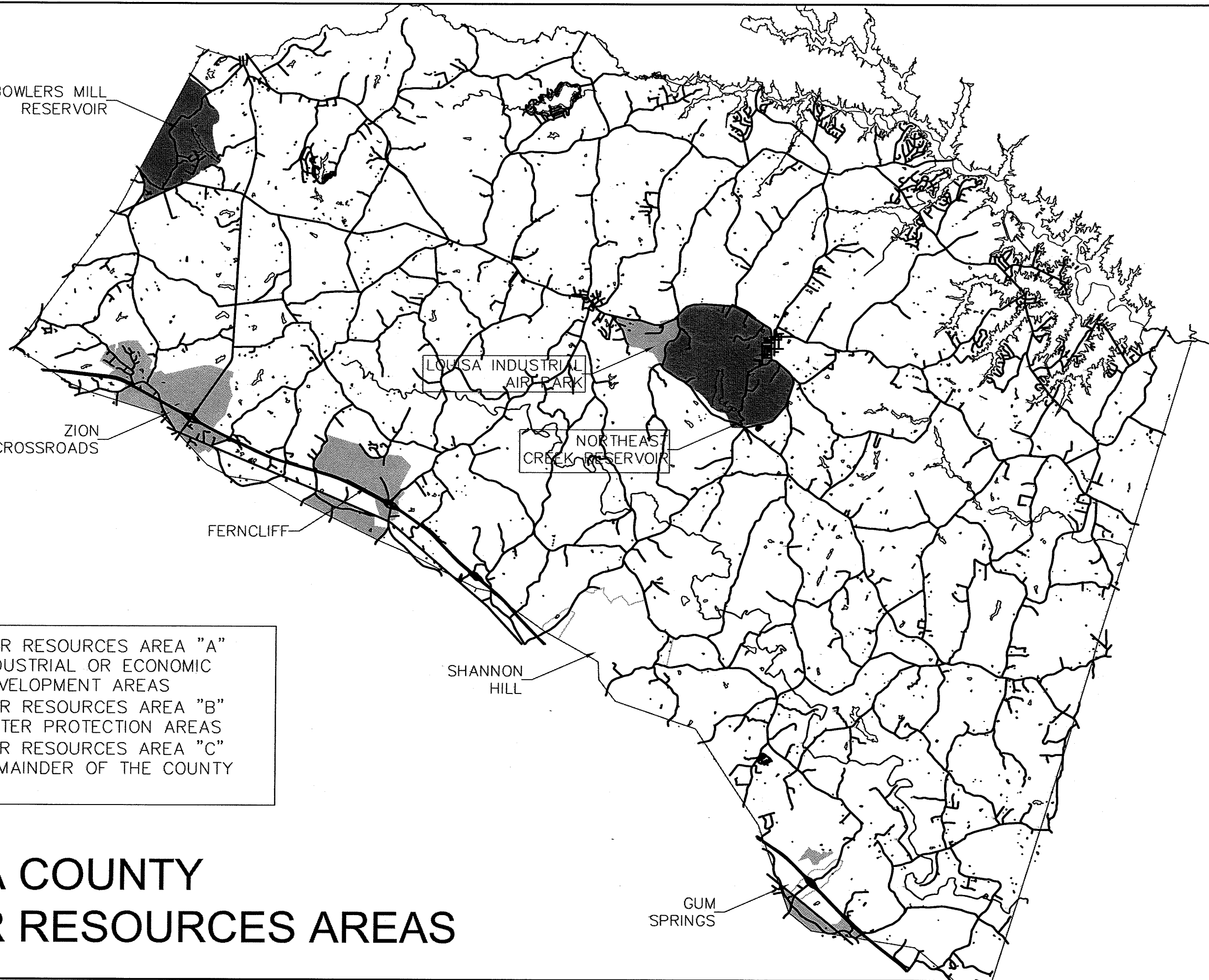
NORTHEAST  
CREEK RESERVOIR

SHANNON  
HILL

GUM  
SPRINGS

- WATER RESOURCES AREA "A"  
INDUSTRIAL OR ECONOMIC  
DEVELOPMENT AREAS
- WATER RESOURCES AREA "B"  
WATER PROTECTION AREAS
- WATER RESOURCES AREA "C"  
REMAINDER OF THE COUNTY

# LOUISA COUNTY WATER RESOURCES AREAS



**TIMMONS**  
Founded  
1958

ENGINEERS • ARCHITECTS • SURVEYORS • LANDSCAPE ARCHITECTS • ENVIRONMENTAL SCIENTISTS • GEOGRAPHIC INFORMATION SYSTEMS CONSULTANTS • CONSTRUCTION MANAGERS

**LOUISA CO. STORMWATER ORDINANCE**  
OVERALL WATER RESOURCES AREA MAP

SHEET NO.  
1 OF 1  
JOB NO.  
19394

CORPORATE HEADQUARTERS: 1000 W. WISCONSIN AVE., SUITE 200, MILWAUKEE, WI 53233-4097  
 CHICAGO OFFICE: 100 N. LAKE ST., SUITE 200, CHICAGO, IL 60601  
 DENVER OFFICE: 1700 W. 17TH AVENUE, SUITE 200, DENVER, CO 80202  
 HOUSTON OFFICE: 1400 WESTHELL BLVD., SUITE 200, HOUSTON, TX 77058  
 KANSAS CITY OFFICE: 1000 W. 17TH AVENUE, SUITE 200, KANSAS CITY, MO 64108  
 LOS ANGELES OFFICE: 1000 W. 17TH AVENUE, SUITE 200, LOS ANGELES, CA 90024  
 MEMPHIS OFFICE: 1000 W. 17TH AVENUE, SUITE 200, MEMPHIS, TN 38103  
 NEW YORK OFFICE: 1000 W. 17TH AVENUE, SUITE 200, NEW YORK, NY 10027  
 PHOENIX OFFICE: 1000 W. 17TH AVENUE, SUITE 200, PHOENIX, AZ 85001  
 RICHMOND OFFICE: 1000 W. 17TH AVENUE, SUITE 200, RICHMOND, VA 23220  
 TAMPA OFFICE: 1000 W. 17TH AVENUE, SUITE 200, TAMPA, FL 33606  
 WASHINGTON DC OFFICE: 1000 W. 17TH AVENUE, SUITE 200, WASHINGTON, DC 20004

REVISION DESCRIPTION	DATE
	2/25/02
DRAWN BY	D.ARRINGTON
DESIGNED BY	D.MAXWELL
CHECKED BY	D.MAXWELL
SCALE	1" = 15,000'