

WILLIAM EDWARDS & ASSOCIATES  
 1700 EAST MAIN STREET  
 SUITE 100  
 FARMINGTON, CT 06030

THE WOODWARD  
 1700 EAST MAIN STREET  
 SUITE 100  
 FARMINGTON, CT 06030

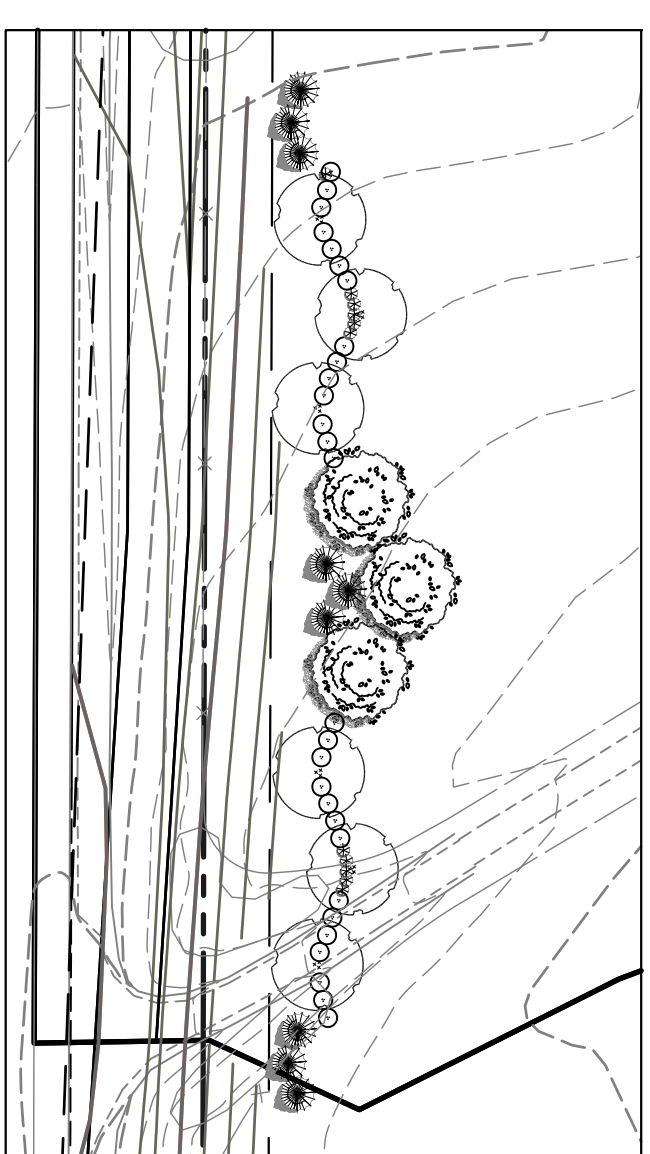
WILLIE BENT  
 1700 EAST MAIN STREET  
 SUITE 100  
 FARMINGTON, CT 06030

FRANK R. HARRIS  
 724 EAST PRINCETON  
 028 882-2948

CLARENCE HARRIS  
 724 EAST PRINCETON  
 028 882-2948




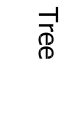


**Route 250 Streetscape Planting Concept:**



\*This type of planting scheme will be implemented intermittently along Route 250.

**LEGEND:**

-  Large Deciduous Tree
-  Medium Deciduous Tree
-  Small Evergreen Shrub
-  Medium Evergreen Tree

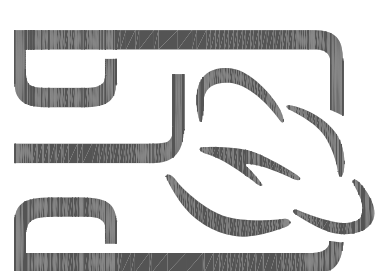
All rights reserved. No part of the material protected by this copyright notice may be reproduced, stored in a retrieval system, or transmitted in any form or by any means, electronic or mechanical, including photocopying, recording, or by any information storage and retrieval system, without written permission from Bent Tree Design, P.C.

These plans may not be subject to a third party without the written consent of BENT TREE DESIGN, P.C.

SCALE: 1"=150'  
 ISSUED: 11.06.09  
 DRAWN BY: SEC  
 REVISIONS:  
 1. 3.04.10 AGENCY COMMENTS

**FERNCLIFF BUSINESS PARK**  
 LOUISA COUNTY, VIRGINIA  
**PRELIMINARY PLAT  
 LOT LAYOUT PLAN**

**BENT TREE DESIGN, PLC**  
 1155 WEST MAIN STREET, SUITE 100  
 FARMINGTON, CT 06030  
 434-230-2551

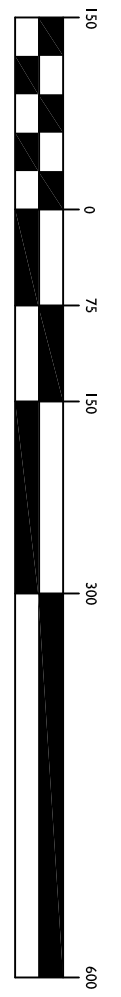


SHEET

**3**

J.N. 06/09 OF 3

**GRAPHIC SCALE\***



\*NON-STANDARD SCALE. USED TO SHOW AS MUCH DETAIL AS POSSIBLE